



CHARLES KNIGHT  
ESTATE AGENTS



## 702 Woolwich Road , London, SE7 8LQ £1,550

Stylish One-Bedroom Ground Floor Apartment | Bills Included | Excellent Transport Links

Discover this contemporary, high-specification one-bedroom ground floor apartment ideally located in the heart of Charlton. Finished to an excellent standard throughout, this sleek home is perfect for professionals seeking modern living with superb transport connections and nearby amenities.

### The Property

The apartment boasts a bright and spacious open-plan layout, enhanced by wood-effect flooring and impressive floor-to-ceiling windows that flood the living area with natural light.

### Open-Plan Living & Kitchen

A modern fitted kitchen featuring minimalist grey cabinetry, a striking blue patterned splashback and a full range of integrated appliances including oven, hob, washing machine and large fridge-freezer.

### Bedroom & Bathroom

The generous double bedroom is finished in neutral tones and benefits from direct access to a stylish en-suite bathroom. The luxury bathroom is fully tiled in a grey marble-effect finish and includes a large walk-in glass shower, vanity storage and a chrome heated towel rail.

## Viewing

Please contact our Lewisham Office on 02088 524441 if you wish to arrange a viewing appointment for this property or require further information.



1



1



1



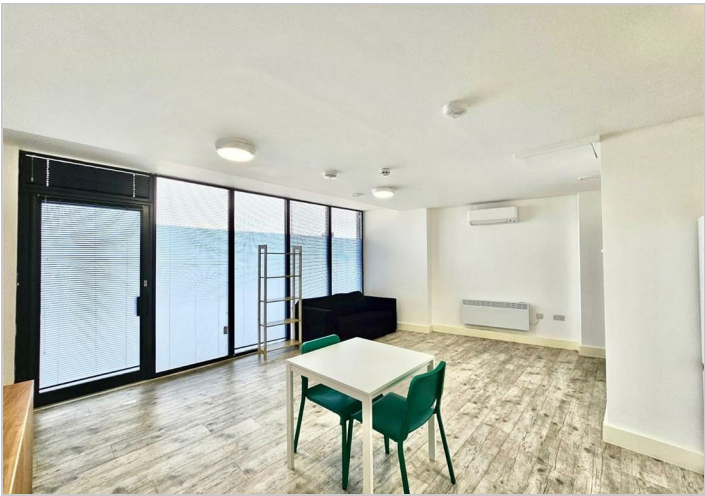
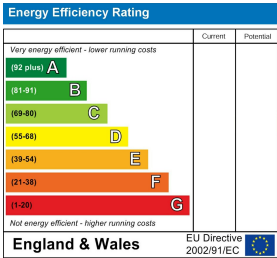
Floor Plan



Area Map



Energy Efficiency Graph



These particulars, whilst believed to be accurate are set out as a general outline only for guidance and do not constitute any part of an offer or contract. Intending purchasers should not rely on them as statements of representation of fact, but must satisfy themselves by inspection or otherwise as to their accuracy. No person in this firms employment has the authority to make or give any representation or warranty in respect of the property.